



HALLS HEAD  
COLLEGE ESC

# WORK PLACE LEARNING NEWSLETTER

Year 10



**CLASS OF 2022**

**Building maturity, independence and self-confidence through WPL**



# HALLS HEAD COLLEGE ESC

## WPL 2022

### CONTENTS

<i>Name</i>	<i>Page</i>
<i>Aaron</i>	<i>4</i>
<i>Aleisha</i>	<i>5</i>
<i>Bejay</i>	<i>6</i>
<i>Damien</i>	<i>7</i>
<i>Daniel</i>	<i>8</i>
<i>Dylan</i>	<i>9</i>
<i>Fraser</i>	<i>10</i>

<i>Name</i>	<i>Page</i>
<i>Haydn</i>	<i>11</i>
<i>Jacob</i>	<i>12</i>
<i>Karen</i>	<i>13</i>
<i>Mitchell</i>	<i>14</i>
<i>Tyler</i>	<i>15</i>
<i>Zane</i>	<i>16</i>



## *A message from Mrs Doorn*

A huge thank you to all the businesses in the community who have provided work placements this year. With your continued support the students at Halls Head College Education Support Centre have had the opportunity to experience and demonstrate their Core Skills for Work, while exploring their job interests into the future.

## *Endorsed Programs:*

The students have been enrolled in Endorsed Programs, including Authority Developed Workplace Learning (ADWPL) and ASDAN - Towards Independence, through the School Curriculum and Standards Authority (SCSA). These courses and programs contribute to the Western Australian Certificate of Education (WACE) statement of results or the Western Australian Statement of Student Achievement (WASSA) .

All students participated in the Workplace Learning Program over two school terms, which has provided them with the opportunity to work in a supported environment in the community and develop skills that are transferable to all forms of employment or further training.

## *ADWPL*

Authority Developed Workplace Learning (ADWPL) requires the students to keep an up to date logbook and to demonstrate a variety of Core Skills for Work that have been identified by employers as being highly desirable. They also need to complete a minimum of 55 hours in the workplace and complete a set of 10 Skills journal questions for each 55 hours of work completed.

## *ASDAN - Towards Independence*

Towards Independence provides an opportunity for students to experience a work environment, where they can learn about and begin to develop personal, social and independent skills whilst working in a variety of industries.

## *THANK YOU TO OUR STAFF*

A big thank you to our wonderful staff. Workplace Learning would not be possible without the dedication, support and flexibility of our staff members:

Michelle Lockley, Lynne Smith, Lisa Wilson, Annabelle Beeton, Sandy Gallagher, Kelly Kennedy, Mel Tainsh and Katie Hodge

*Candyce Doorn*  
Deputy Principal





# AARON



*"I really liked  
feeding the ducks  
and the rabbits"*



# ALEISHA



*"I learnt how to  
organise the boots  
and helmets for the  
riding classes"*





# BEJAY



"I enjoyed learning how to use the equipment and eventually doing it by myself"





# DAMIEN



"I enjoyed going on deliveries with Steve and learning how to use the pallet jack"





# DANIEL



"I enjoyed using the machine that dips the hats to get the picture on them"





# DYLAN



*"I liked doing jobs for everyone and helping customers, because I liked feeling helpful"*





# FRASER



"I had fun scanning the books and sorting the DVD's and doing the craft"





# HAYDON



*"I particularly liked putting the stock on the shelves and I felt confident doing this"*

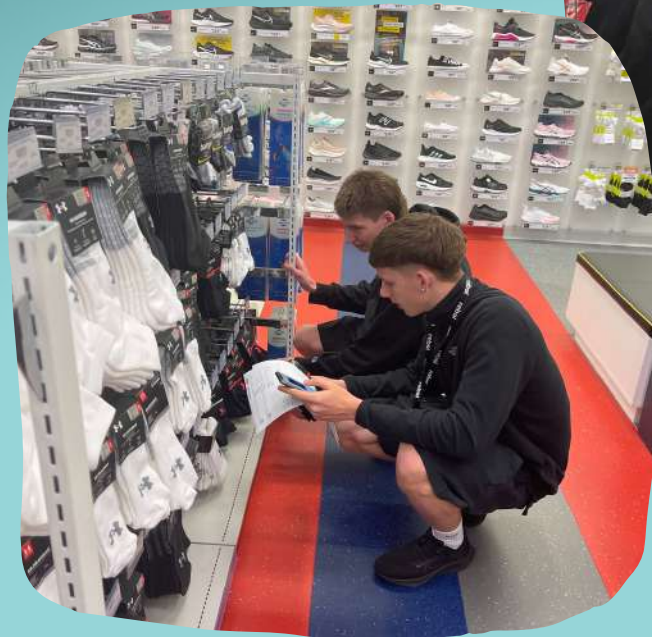




# JACOB



*"I helped customers by putting items in their cars and blowing up the basketballs"*





# KAREN



*"I really enjoyed holding the bobtails"*





# MITCHELL



Hard-Hat Safety:  
Helmet Alongside  
tag, 3M wide-1

"I liked washing the  
hats, as it was a  
straight forward job "





# TYLER

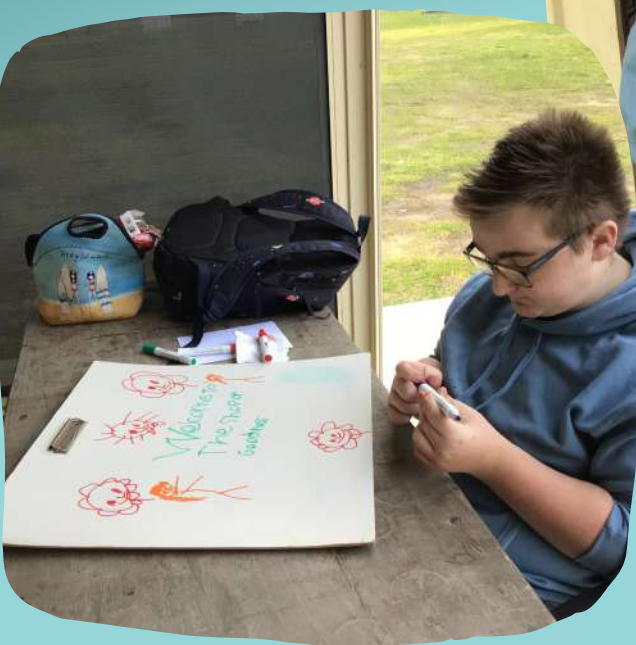


"I liked working outside with the plants and using different tools"





# ZANE



"I liked writing the sign to welcome the customers to the shop"





# WHAT A GREAT LEARNING EXPERIENCE





# THANKS TO OUR EMPLOYERS

## *A message from Mrs Lockley*

It has been another successful year of Workplace Learning, which was made possible by the support of the employer's below. These businesses take the time from their regular duties to ensure our students are supported by mentors and have the opportunities to learn Core Skills for Work, in an engaging and supportive environment.

Our students continue to work on their key skills for success (confidence, resilience, organisation, getting along and persistence) whilst in the workplaces with the support of our amazing school support staff.

*May I take this opportunity to thank all of the Employers who have supported our school WPL program for 2022*

- Australia Post
- Cool hard hats
- Falcon E-Library
- Homestead for Youth
- Mandurah Community Gardens
- Mandurah Wildlife Centre
- RDA Fairbridge
- Rebel sports
- Repco Halls Head
- Shakerz bakery
- The shed op-shop
- Woolworths Mandurah Central

*Michelle Lockley*  
Structured Workplace Learning  
Support Officer







AUSTRALIA  
**POST**



Falcon eLibrary



**COOL HARD HATS**





